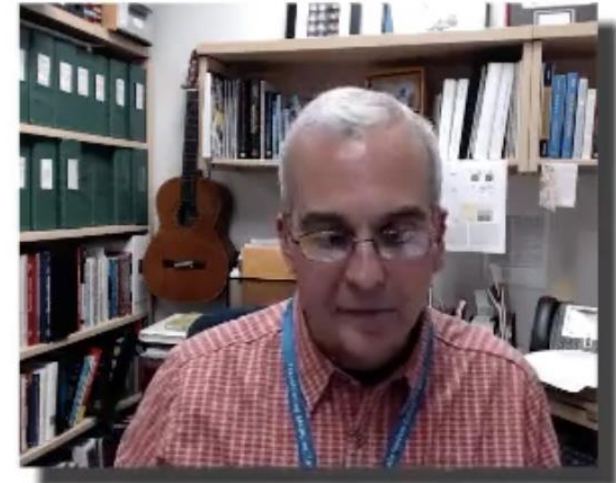
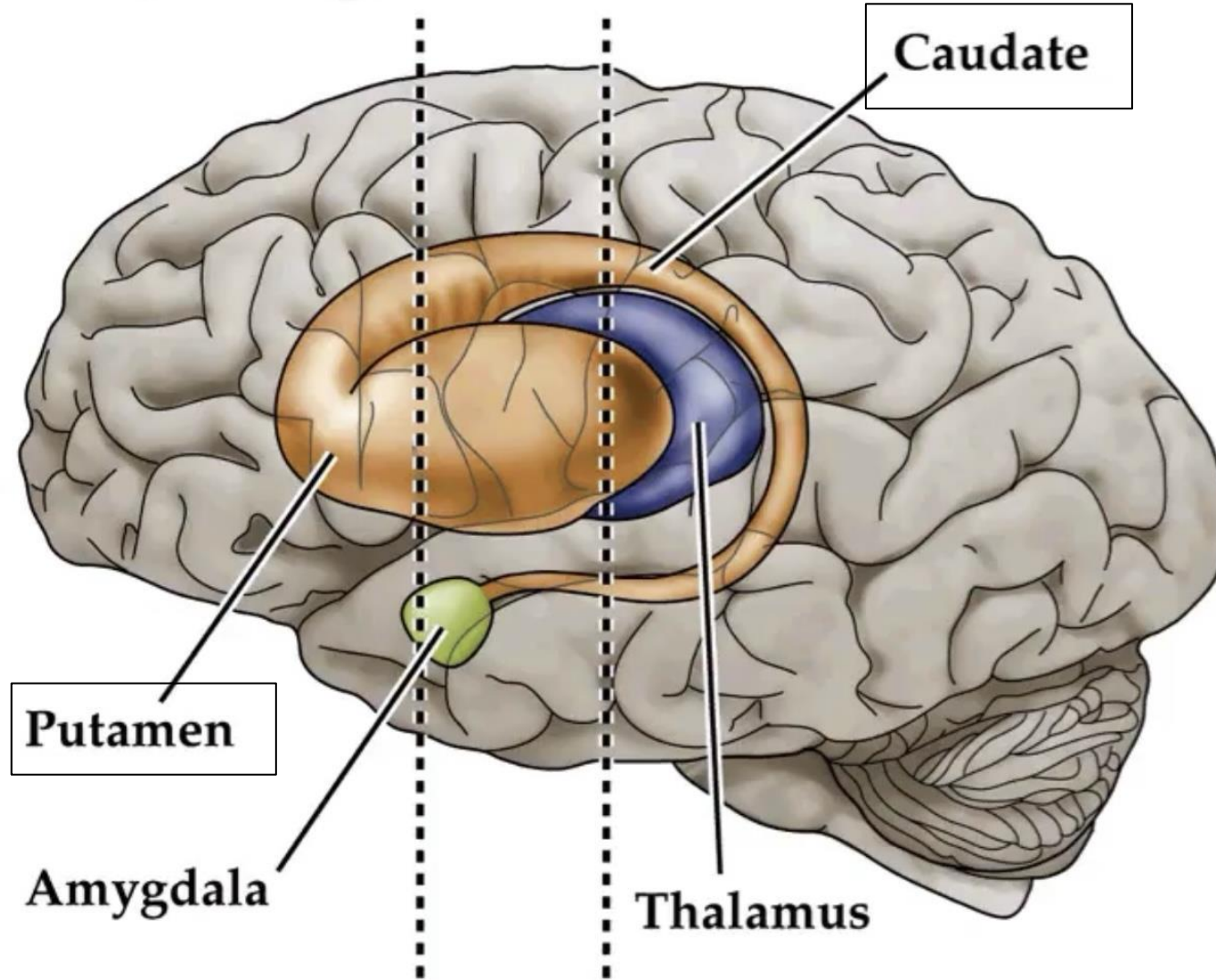


The Basal Ganglia

- Initiation of Movement
- Inhibition of Movement

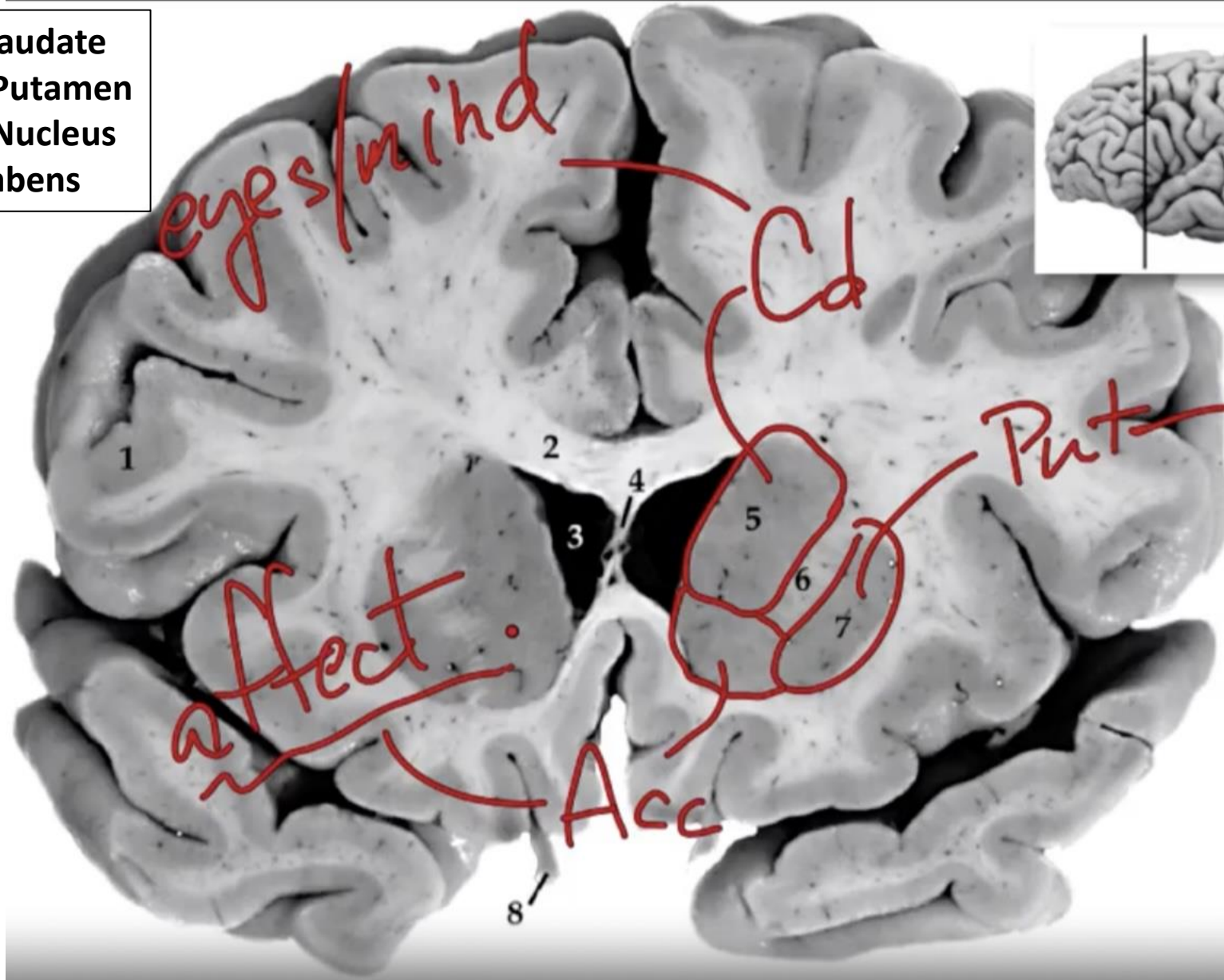


Major parts of the basal ganglia



Coronal View of the Basal Ganglia

Cd = Caudate
Put = Putamen
Acc = Nucleus
Accumbens

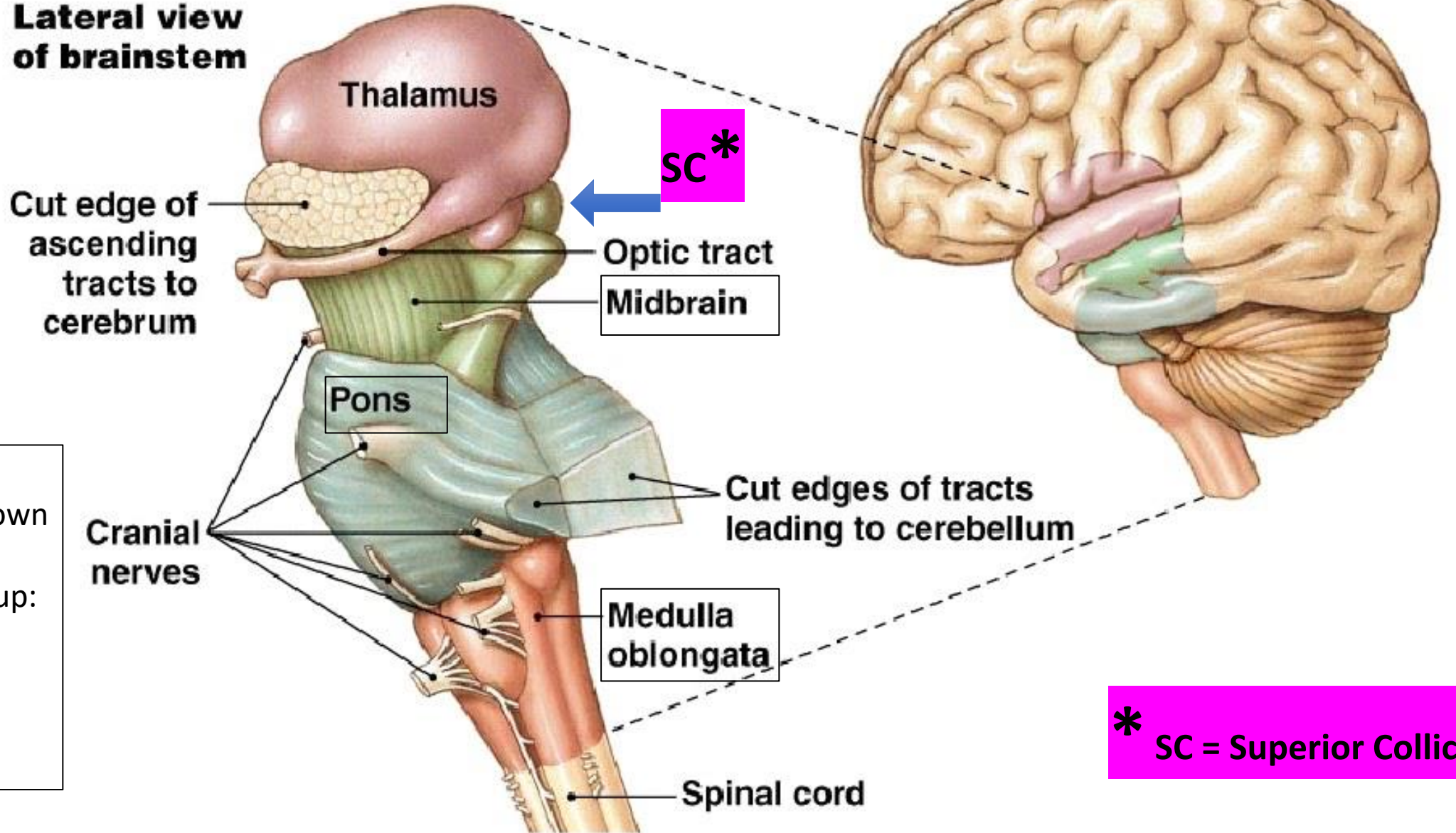


body
mind



Lateral View Brainstem

**Lateral view
of brainstem**



**Parts of
brainstem** shown
in text boxes
from bottom up:
- Medulla
oblongata
- Pons
- Midbrain

* SC = Superior Colliculus